

This week, we have been learning to read and spell words containing **ture** saying /cher/.



Level 6

## ture

In some words, the **ture** spelling makes the /cher/ sound. This is usually at the end of words.

**capture**  
**picture**



## Common Exception Words

We have been learning to spell the common exception words **delicious** and **fruit**.

## Focus Words

**future**

**picture**

**sculpture**

**nature**

**vulture**

**adventure**

**creature**

**capture**



## Grammar

This week, we have been looking at the difference between questions and commands.



- **Questions** ask something. They start with a capital letter and finish with a question mark. They usually include **who, what, where, when, why** or **how**.

**When** does the film finish?

- A **command** gives someone an instruction or tells them to do something. It usually begins with an **imperative (bossy) verb** and can end with either an **exclamation mark** to show emotion or a **full stop**.

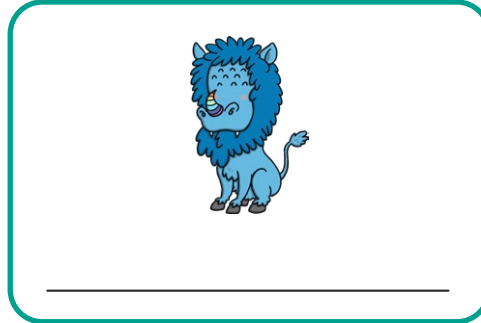
**Put** your coat on.  
**Get** in the bath!

# ture Word and Picture Match



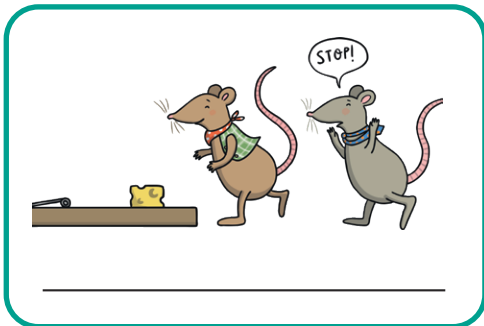
Level 6

Write the word on the line to match the picture.



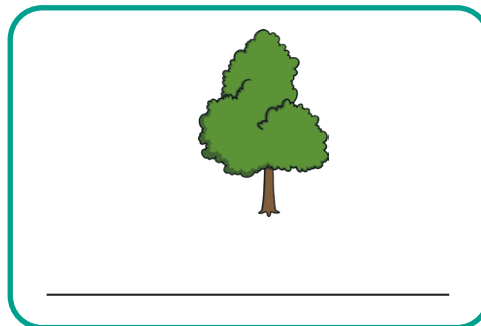
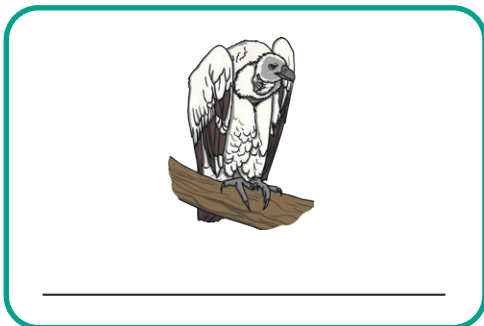
picture

capture



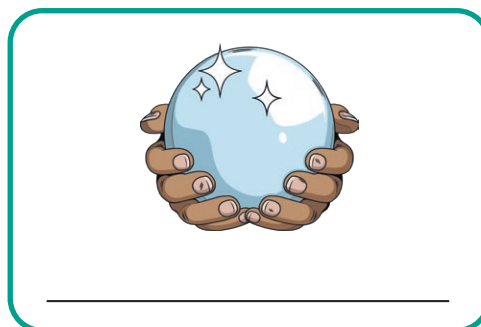
vulture

adventure



future

creature



sculpture

nature

Can you write one sentence containing a **ture** word?

---

---

# ture Word and Picture Match

## Answers



Level 6



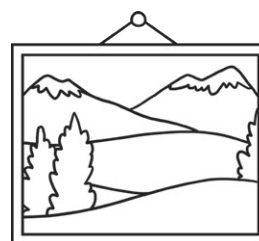
**adventure**



**creature**



**capture**



**picture**



**vulture**



**nature**



**sculpture**



**future**